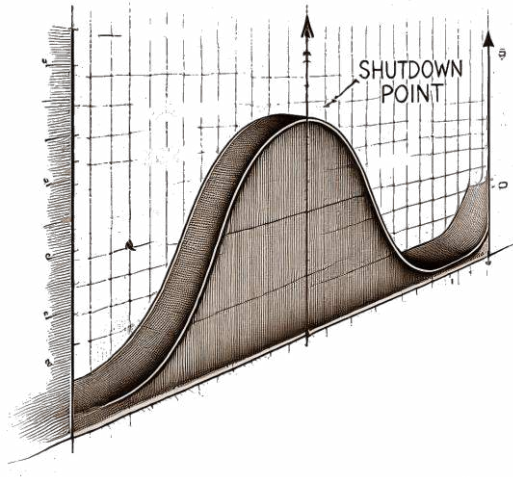


Use Cases – Highly Controllable



Project Challenges

Our customer is developing a vehicle equipped with a fuel pump system. Precise frequency monitoring and external control are crucial to prevent overfilling, which could result in fuel spillage and pose a risk of fire or explosion.

Solution

By combining two MPI-1600 units with a supervisor module, we achieve a total power output of 3200 W, ensuring the required monitoring and precision of the overall system and contributing to the safety concept at the component level.

Additional Challenges

During the project, changes in the production process and personnel turnover led to configuration challenges that could not be optimised on the customer's side at that time.

Our Approach

Following discussions between our customer and the end user, we were provided with the required configurations, enabling us to preconfigure the devices according to the project specifications. Additionally, we supplied training videos to support a seamless implementation.