
ALSEAMAR

ALCEN

RAPID ENVIRONMENTAL ASSESSMENT (REA)

MONITORING OF OCEANOGRAPHIC ASSETS WITH GLIDER DATA
COLLECTION

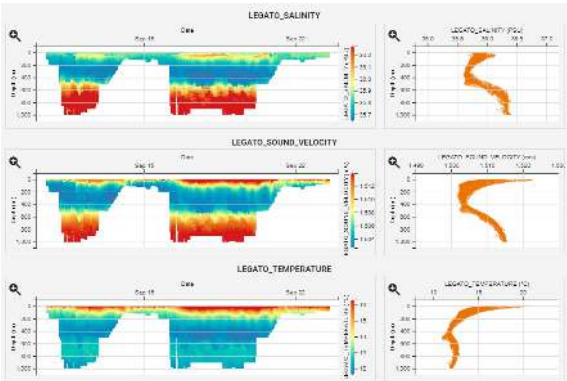


CONCEPT OF OPERATIONS (CONOPS)

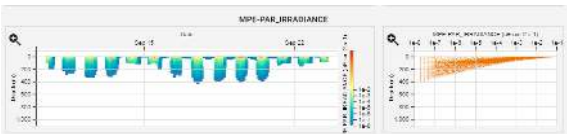
- **Bioluminescence assessment** : in-situ measurements of bioluminescence - mitigation of detection risks
- **Light penetration assessment** : monitoring of light penetration at different wavelengths - calculation of the depth of invisibility for underwater assets
- **Water current monitoring** : real-time calculation of water current profiles - knowledge of assets navigability
- **Sonar propagation assessment** : monitoring of sound velocity across the water column - modelisation of sound propagation

PAYLOAD OPTIONS

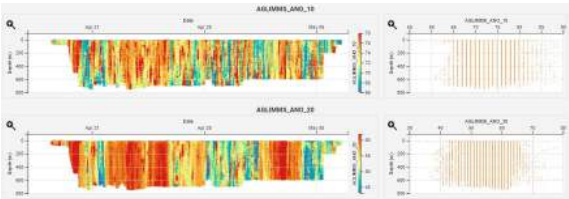
- **CTD** : conductivity, temperature, depth and sound celerity
- **Bioluminescence sensor** : ratio metric marine bioluminescence
- **Light sensor** : Photo Active Radiation sensor (PAR)
- **ADCP** : in-situ ambient noise spectrum
- 20 other sensors available



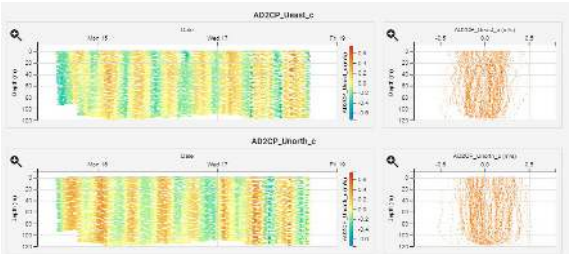
Sound velocity profiles (CTD)



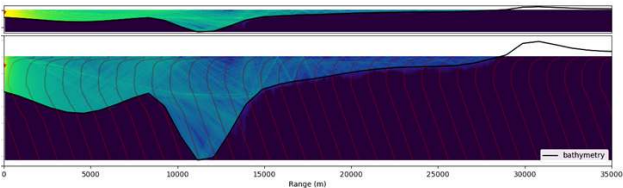
Light penetration (PAR)



Acoustic levels at different frequencies



Underwater currents (ADCP)



Sonar Propagation Assessment based on CTD data



ALSEAMAR offers SeaExplorer as a product or in-situ data as a service.
For more information, please contact our sales team at sales@alseamar-alcen.com



ALCEN
6 rue Paul Baudry
75008 PARIS – France
Tel. + 33 (0)1 40 72 55 00
alcen@alcen.com
www.alcen.com

ALSEAMAR
60 Avenue Olivier Perroy
13790 ROUSSET – France
Tel. + 33 (0)4 42 61 64 80
sales@alseamar-alcen.com
www.alseamar-alcen.com