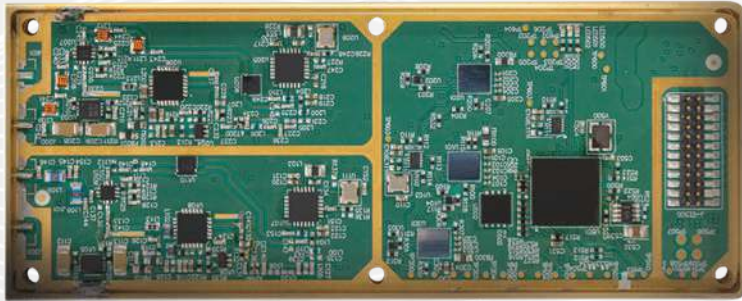


# PDW / BlackWave / Radio



**BlackWave** radio provides a powerful wireless control link for the modern warfighter. Resistant to intentional and unintentional jamming. Facilitates control of small robotics and critical communications in heavily contested, dynamic environments.

Triple redundant C2 link tested and challenged by Joint Vulnerability Assessment Bureau, BlackWave has proven to be a durable tactical wireless link.

Feature	Specification
Frequency Range	100MHz to 3GHz
Frequency Hopping Range	100MHz to 3GHz
Data Bandwidth	1Mbps Bandwidth
Data Transmission	Ethernet Frames + Video Stream
Data Terminal Interface	ENET, USB
Input Power	10-28VDC
RF Input Power	Active Gain up to 1W
Encryption	AES-256
Operating Temp	-20 C to 55 C
Ingress Protection	IP54
Dimensions	
Embedded Module	65mm x 60mm x 25mm
Tactical Module	65mm x 60mm x 40mm
Mass	
Embedded Module	130g
Tactical Module	500g

**Interference Avoidance:** Monitors RF environment and hops to a clean operational frequency.

**Brute Force Mode:** Operates at Max power output to enable signal superiority within the operational area.

**Stealth Mode:** Operates an actively used frequency at low gains to hide communications within ambient RF noise.

**Spoofing Mode:** Ability to spoof devices using a specific frequency to disrupt hostile operations within the operational area.

**CDMA:** Enables multiple radios to operate seamlessly within an area without interference with each other.

**Triple Redundancy:** Using three C2 simultaneous links and ability to piece reliable data from intentionally jammed frequency.